




- Fridays' Swyx Tip
- 
- 

Fridays' Swyx Tip

 A group blog by Mirjam Baumberger in General



Fridays' Swyx Tip #42: Status Panel



Entry posted by Tom Wellige July 31, 2020

782 views

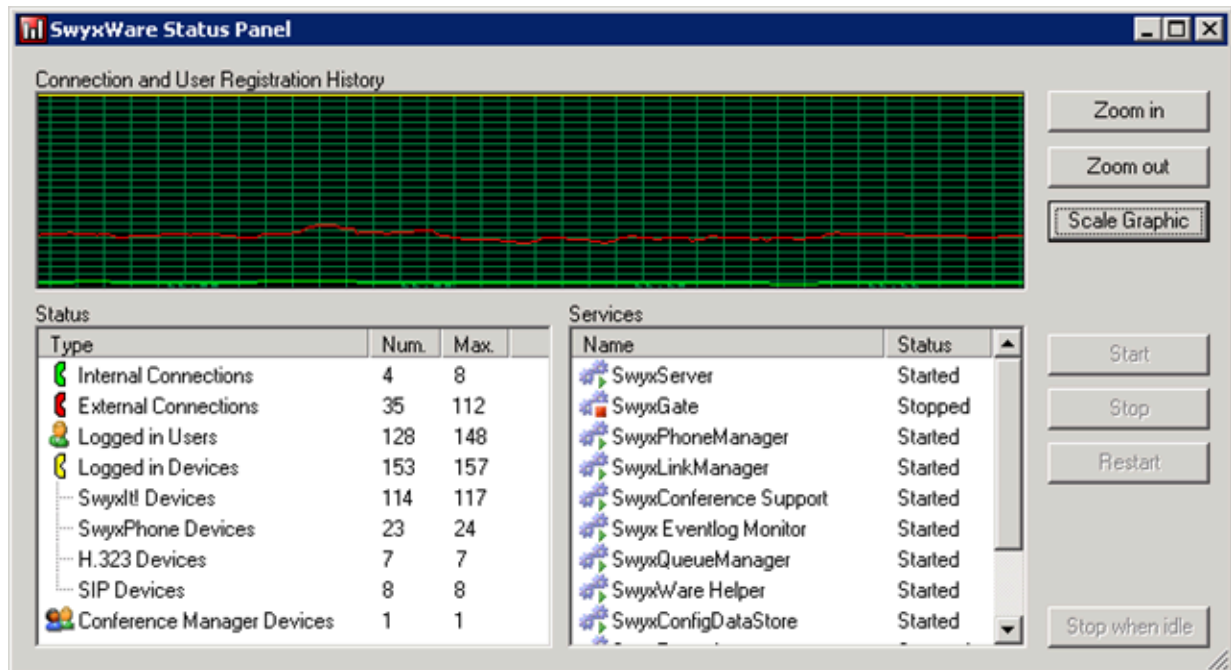
From 2009 to 2011 [mirjam baumberger](#) wrote a great blog, the "**Fridays' Swyx Tip**". Every Friday she posted a tip regarding the usage of SwyxWare and connected tools and devices. As the old forum is offline, this article series will be restored here again over the time. Please note that some information in this article series might not be valid anymore with current SwyxWare versions.

This blog article was originally posted on 18.06.2010 00:39

Dear Swyx Users

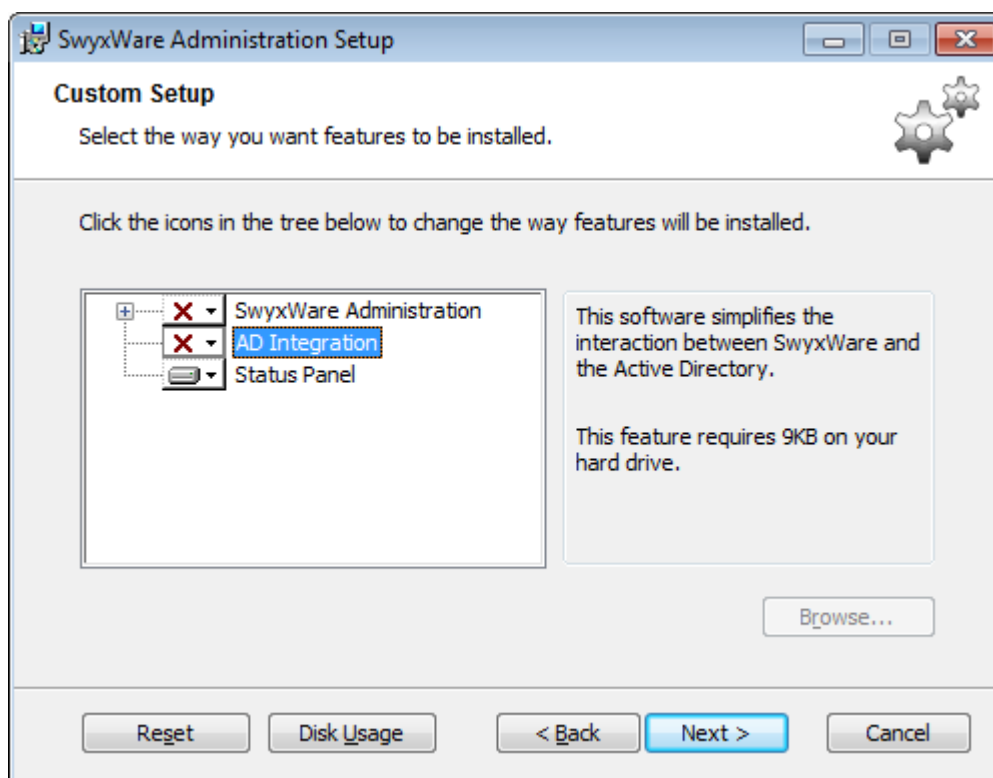
Did you know that the SwyxWare Status panel provides you a nice overview on your SwyxServer activities?

You will find this application on your SwyxServer in All Programs / SwyxWare. Additionally, this Status Panel can be installed on a remote PC, enabling you to monitor your SwyxServer's activity. Information such as how many external and internal calls are in your system, or how many users are currently logged on, are available at your finger-tip.



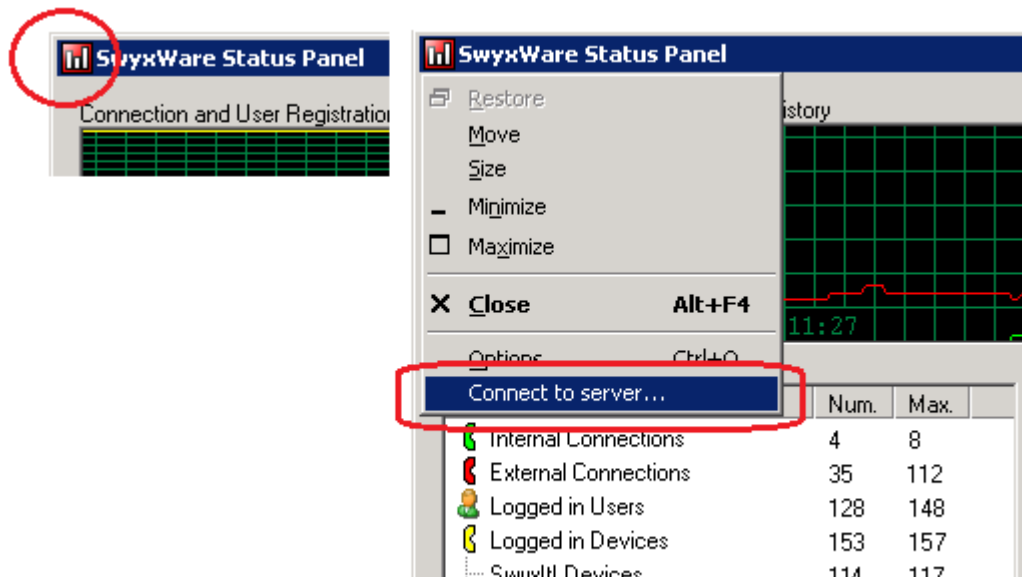
How to configure SwyxWare Status Panel on Remote PC:

1. Install SwyxWare Administration on your PC and select Status Panel and follow the wizard.

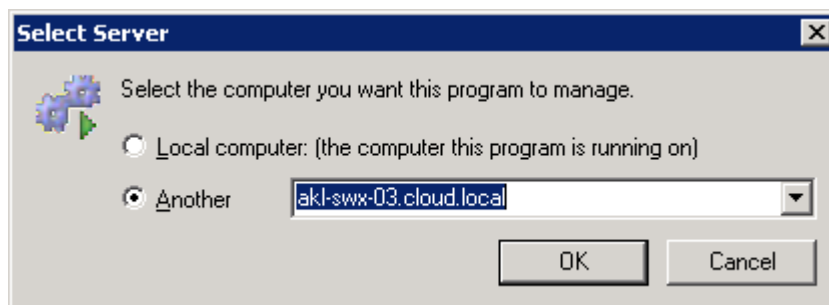


2. Now, start application SwyxWare Status Panel from "All Programs/SwyxWare"

3. Click on the Icon and select option Connect to server...



4. Enter your Swyx Server name or IP address



5. You have now an view on how many concurrent calls are in your system and also how many users are logged to your IP PBX

The screenshot shows the 'Status' window. It contains a table with columns 'Type', 'Num.', and 'Max.'.


Type	Num.	Max.
Internal Connections	4	8
External Connections	35	112
Logged in Users	128	148
Logged in Devices	153	157
Swyx!t! Devices	114	117
SwyxPhone Devices	23	24
H.323 Devices	7	7
SIP Devices	8	8
Conference Manager Devices	1	1

6. Important: The user running the SwyxStatus Panel on a remote PC must be member of the SwyxWare services group on the SwyxServer!

Have a good weekend and happy Swyxing...

Regards
Mirjam

@ IT Net World Ltd, NZ & AUS SWYX Distributor
<http://www.itnetworld.co.nz/>

 Share

Followers

1

< Previous entry
Fridays' Swyx Tip #41: TAPI Support

Next entry >
Fridays' Swyx Tip #43: Delete System Skins

0 Comments

There are no comments to display.

Create an account or sign in to comment

You need to be a member in order to leave a comment

Create an account

Sign up for a new account in our community. It's easy!

Register a new account

Sign in

Already have an account? Sign in here.

Sign In Now

Theme ▼

Copyright (c) 2007-2025 by Tom Wellige
Powered by Invision Community